



Acadiana

Fetal & Infant Mortality Review

Fall 2011 Newsletter

Keeping our FIMR mission and goals in mind... improved pregnancy outcomes and healthier infants by fostering protective behaviors and promoting preventive interventions.

Louisiana MCH Program Updates

Dr. Robert Maupin and Adrienne Finley, from the Louisiana Office of Public Health Maternal and Child Health Program, attended the August FIMR Community Action Team meeting in Lafayette.

Some changes have been made to regional FIMR programs in order to expand the scope of coordinator responsibilities to abstract and address fetal, infant and maternal deaths.

Regional MCH staff is currently abstracting 2009 maternal death records, having completed 2008 deaths statewide. Dr. Maupin shared information about the history of pregnancy mortality surveillance in Louisiana, and use of the CDC/ACOG “pregnancy-associated death” definition as the death of a woman while pregnant or within one year of termination of pregnancy, irrespective of cause of death.

Results of the 2008 statewide data abstraction and review of 50 cases revealed that most of the maternal deaths occurred between 3 to 12 months after delivery. The highest percentages for cause of death were injury, homicide and cardiac disease. Pregnancy-associated violent deaths occurred most frequently in women 20 to 34 years of age. Among the top recommendations based on the state team’s assessment were including law enforcement on the committee, substance abuse counseling, active mental health screening, and smoking cessation counseling.

Sign up for the **MCH e newsletter** generated by Partners for Healthy Babies at www.1800251baby.org/enewsletter-subscription Fill out the information and confirm subscription from your email. Also sign up to Facebook and Twitter!

Be sure to check the new and interactive **DHH website** at www.dhh.la.gov

2011 Infant Mortality Awareness Event

Many community partners and special guests gathered at the **Memorial Site at Rotary Point** for the 3rd annual event in September, designated nationally as “Infant Mortality Awareness Month”.

Speakers shared important information and insights about efforts to address and improve our state and regional birth outcomes. Preterm birth continues to be the leading cause of infant death in Louisiana, while motor vehicle crashes are the leading cause of child deaths.

Dr. Kenneth Brown reminded those in attendance that racial disparities in birth outcomes and infant mortality continue to raise concern.

Evelyn Landry talked about the importance of promoting breastfeeding as the ‘norm’ for all babies, emphasizing the critical importance of providing mother’s milk to infants born prematurely.

And Donna Broussard commended the FIMR partners and other stakeholders for their commitment and collaborative work to raise community awareness and provide relevant education regarding the health of women, infants, children and families in Acadiana.



Acadiana FIMR 2011-2012 Action Plans

The regional action plan has been submitted to the MCH program, which includes the individual working group plans developed by group members and submitted by chairpersons. The working group 2011-2012 action plans are posted on the Family Tree website at <http://www.acadianafamilytree.org/fetal.asp>

Working group mission statements and chairpersons are as follows:

Faith-based Shannon Bernard

“To promote awareness of minority health issues and to provide perinatal risk reduction information through faith-based ministries and churches.”

Acadiana Breastfeeding Coalition Evelyn Landry

“To promote breastfeeding through community awareness/education, support of lactation services, and advocacy for breastfeeding support among health care providers, health care facilities and businesses in Acadiana.”

Health Advocacy and Policy Donna Broussard

“To advocate for better infant health and women’s health before, during and after pregnancy by raising community awareness of perinatal health issues through outreach efforts and education.”

Risk Assessment and Education Tracy LeMaire

“To promote awareness of safe sleep and healthy infant environment practices through education and outreach efforts to community and target groups.”

FIMR Report Committee Joan Conway

“To enhance the well-being of women, infants and families through case review and community collaborative efforts to raise awareness, provide education and support intervention services. To assess and report regional FIMR program status and activity at regular intervals.”



Healthy People 2020

“The Healthy People initiative is grounded in the principle that setting national objectives and monitoring progress can motivate action, and indeed, in just the last decade, preliminary analyses indicate that the country has either progressed toward or met 71 percent of its Healthy People targets.” For the past 30 years, Healthy People has been committed to improving the quality of our Nation’s health by producing a framework for public health prevention priorities and actions.
December 2, 2010 U.S. Department of Health & Human Services

Maternal, Infant and Child Health Objectives:

MICH-1 Reduce the rate of fetal and infant deaths

1.1 Fetal deaths at 20 or more weeks gestation.

1.3 All infant deaths (within 1 year).

1.8 Infant deaths from sudden infant death syndrome (SIDS).

1.9 Infant deaths from sudden unexpected infant deaths

(includes SIDS, Unknown Cause, Accidental Suffocation, and Strangulation in Bed)

Target 5.6 fetal deaths/1000 live births

Target 6.0 infant deaths/1000 live births

Target .50 infant deaths/1000 live births

Target .84 infant deaths/1000 live births

MICH-5 Reduce the rate of maternal mortality

Target 11.4 maternal deaths/100,000 live births

MICH-7 Reduce cesarean births among low risk (full-term, singleton, vertex presentation) women

Target 23.9%

MICH-9 Reduce preterm births

9.1 Total preterm births.

Target 11.4%

MICH-21 Increase the proportion of infants who are breastfed

21.1 Ever

Target 81.9%

MICH-22 Increase the proportion of employers that have worksite lactation support programs

Target 38%

MICH-33 Increase the proportion of very low birth weight infants born at level III hospitals or subspecialty perinatal centers.

Target 82.5%

Visit HealthyPeople.gov for all the details

Acadiana Breastfeeding Coalition Makes Official Announcement

City-Parish President Joey Durel proclaimed the month of August “Acadiana Breastfeeding Awareness Month” at a press conference held last month. The new Acadiana Breastfeeding Coalition and its board of directors were introduced to our community.

The highlight of the event was the unveiling of **bus signs** that will be on display in Lafayette’s city buses for several months.

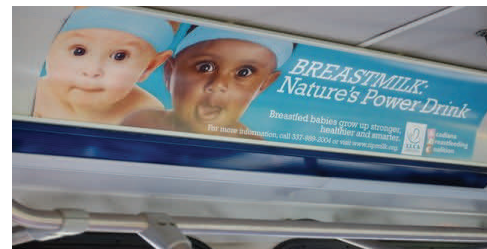
Expect to hear more in the coming months about the outstanding projects planned by this coalition.

For more information about joining the coalition, contact Evelyn Landry at evelyn.landry@lusfiber.net or call (337) 989-2004

DHH Emphasizes Health Benefits of Nursing During Louisiana Breastfeeding Week
<http://new.dhh.louisiana.gov/index.cfm/newsroom/detail/2178>

Louisiana Breastfeeding Coalition louisianabreastfeedingcoalition.org

LGMC promotes breastfeeding http://www.katc.com/player/?video_id=9026 or KATC.com and search “breastfeeding”



Reports, Research and Events

CDC Breastfeeding Report Card 2011 Among all the states, Louisiana has the lowest percent (48.9) of women who have ever breastfed. The U.S. National percent is 74.6, and eleven states have already met the Healthy People 2020 objective of 81.9%.

www.cdc.gov/breastfeeding/data/reportcard.htm

LAPRAMS is an on-going, population-based risk factor surveillance system designed to describe selected maternal behaviors and experiences that occur before and during pregnancy as well as during a child's early infancy. Updated April www.dhh.louisiana.gov/offices/page.asp?id=267&detail=6349

Hauck FR et al Pediatrics, 2011 Jul;128(1): 103-10 The authors conclude that **"breastfeeding is protective against SIDS**, and this effect is stronger when breastfeeding is exclusive. The recommendation to breastfeed infants should be included with other SIDS risk-reduction messages..."

American Journal of Medicine September 2010 This study explored the **relationship between breastfeeding and the risk of type 2 diabetes**. The authors concluded that the risk of type 2 diabetes increases when mothers breastfeed for less than one month.

Balayla J et al Women's Health Issues 2011 Sept-Oct, 21(5):361-5 The authors state "our results suggest that the rate of nonmarital childbearing has risen over the 10-year period from 1995 until 2004 and that **pregnancies among unmarried women are associated with an increased risk** of prematurity and fetal and infant mortality, including SIDS." They conclude that "unmarried mothers-to-be may be targeted with the goal of educating, increasing awareness, and providing resources for proper obstetrical and maternal care." www.sciencedirect.com/science/article/pii/S1049386711000855

WIC program for partial breastfeeding <http://www.dhh.state.la.us/offices/publications/pubs-320/Partial%20BF%20final%207-10.pdf>

WIC program for exclusive breastfeeding <http://www.dhh.louisiana.gov/offices/publications/pubs-320/BF%20Full%20page%20photo%20print.pdf>

G.I.F.T. Training at Dauterive Hospital on November 18, 2011. 6 CEUs louisianabreastfeedingcoalition.org

Maryland Health Officials Propose Banning Crib Bumpers <http://www.chicagotribune.com/news/local/ct-med-crib-bumper-ban-maryland-201110928.0.1968468.story>



Women's Health Expo
October 7-8, 2011

www.womansfoundation.com

3rd Annual Hispanic



3rd Annual Hispanic Health Fair
October 8, 2011

Rcastillo@agcenter.lsu.edu



SIDS Awareness
October 2011

tracy.lemaire@la.gov



Prematurity Awareness
November 2011

shannon@acadianafamilytree.org

2012 FIMR Meetings
to be announced

Case Review Team Meeting

Thursday, October 13, 2011

7:30 am—8:30 am

The Family Tree office

4540 Ambassador Caffery Bldg D Suite B220



Fetal & Infant Mortality Review
Joan Conway RN
OPH Region IV MCH Coordinator
4540 Ambassador Caffery Ste. B220
Lafayette, La 70508
Phone: 337-295-7021
Fax : 337-295-7024
joan@acadianafamilytree.org
www.acadianafamilytree.org
visit FIMR section

Community Action Team Meeting

Thursday, November 10, 2011

9 am — 11 am

Woman's Foundation Classroom

4630 Ambassador Caffery Bldg A

"Never underestimate the power of a small group of committed people to change the world. In fact, it is the only thing that ever has." Margaret Mead

